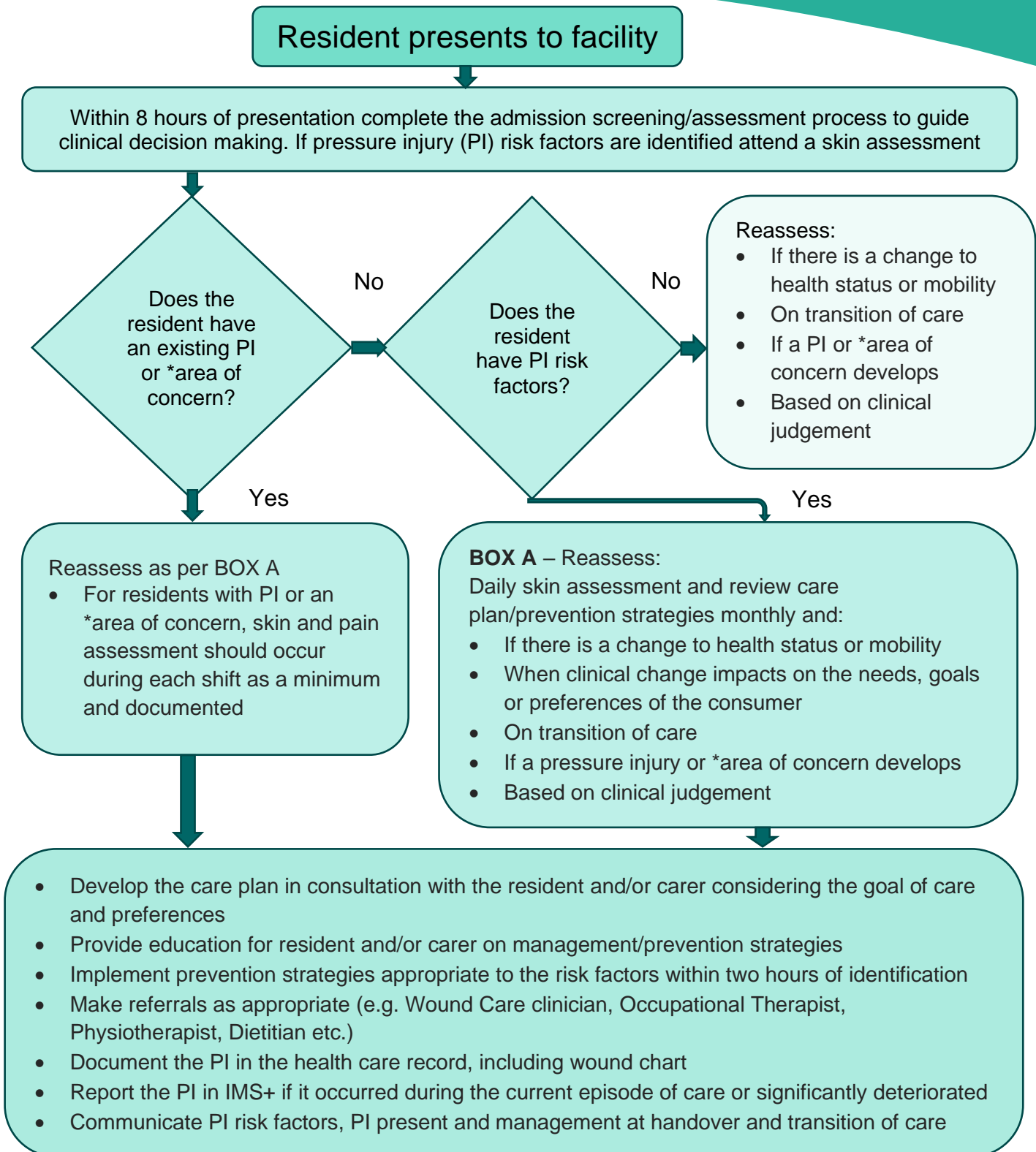


Pressure Injury Prevention & Management for Multi-Purpose Service Long Stay Facility Residents and NSW Health Residential Aged Care Facility Residents



- Develop the care plan in consultation with the resident and/or carer considering the goal of care and preferences
- Provide education for resident and/or carer on management/prevention strategies
- Implement prevention strategies appropriate to the risk factors within two hours of identification
- Make referrals as appropriate (e.g. Wound Care clinician, Occupational Therapist, Physiotherapist, Dietitian etc.)
- Document the PI in the health care record, including wound chart
- Report the PI in IMS+ if it occurred during the current episode of care or significantly deteriorated
- Communicate PI risk factors, PI present and management at handover and transition of care

*Area of concern examples are blanching erythema or an area of incontinence associated dermatitis that requires increased monitoring