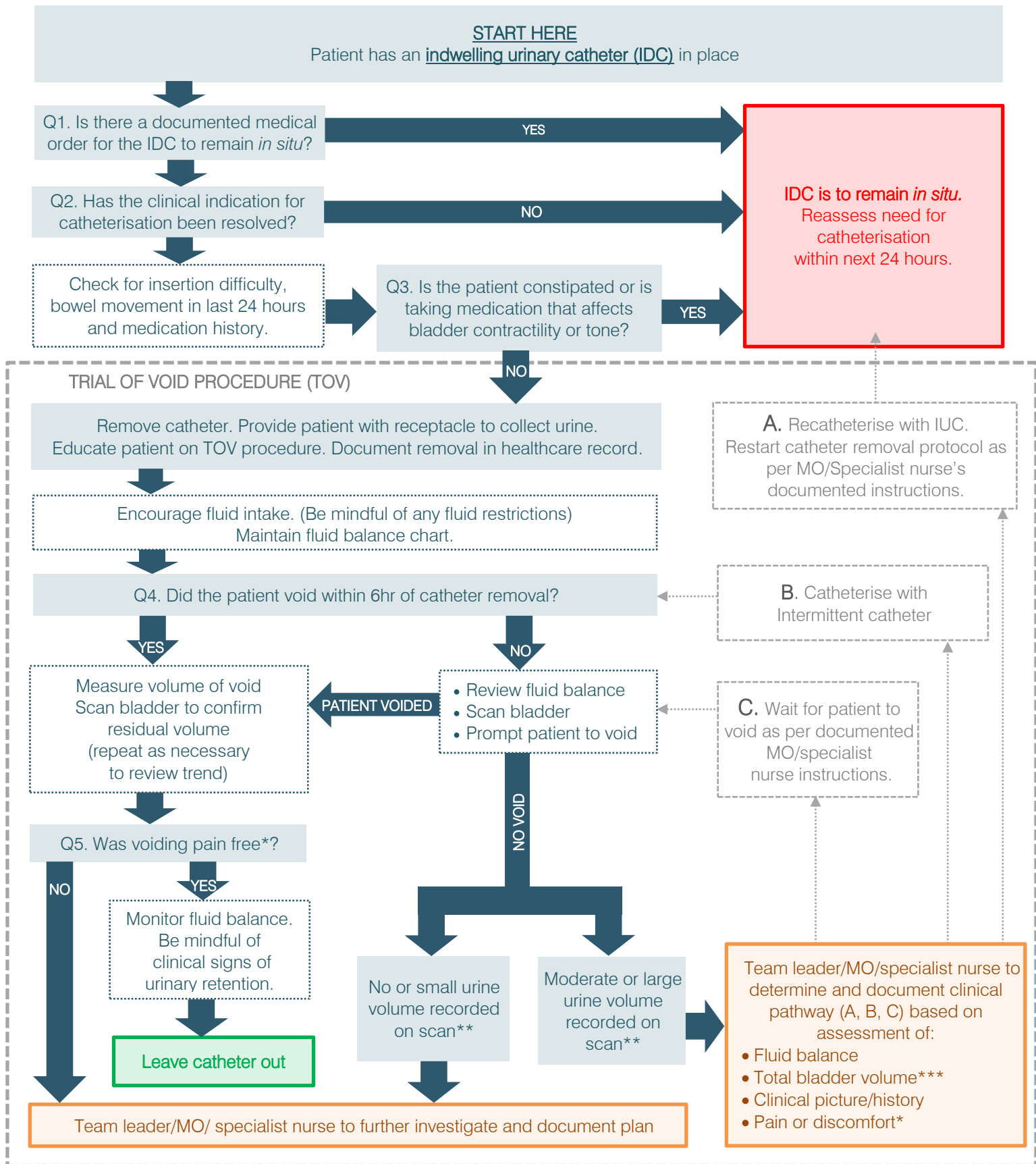


# CRITERIA INITIATED URINARY CATHETER REMOVAL PROTOCOL FOR ADULT PATIENTS IN ACUTE CARE SETTINGS

In the absence of a written catheter removal order, use the flowchart below to identify whether a patient's catheter can be removed and the appropriate removal procedure.

In settings where bladder scanners are not available, percussion of the bladder should be done

This is a generic protocol and **clinicians should assess each individual patient** to ensure that catheter removal is appropriate.



\* May not be appropriate for patients with spinal cord injury, stroke or delirium  
 \*\*Post void residual is variable and requires individual assessment. A post void residual volume of 1/3 of the voided volume may be acceptable.  
 \*\*\* Total bladder volume = volume voided + volume on scan  
 This tool was original produced by HNE LHD and has been modified by the Clinical Excellence Commission.

↑ A clinical assessment of the patient should be undertaken before selecting a pathway marked with this arrow.